

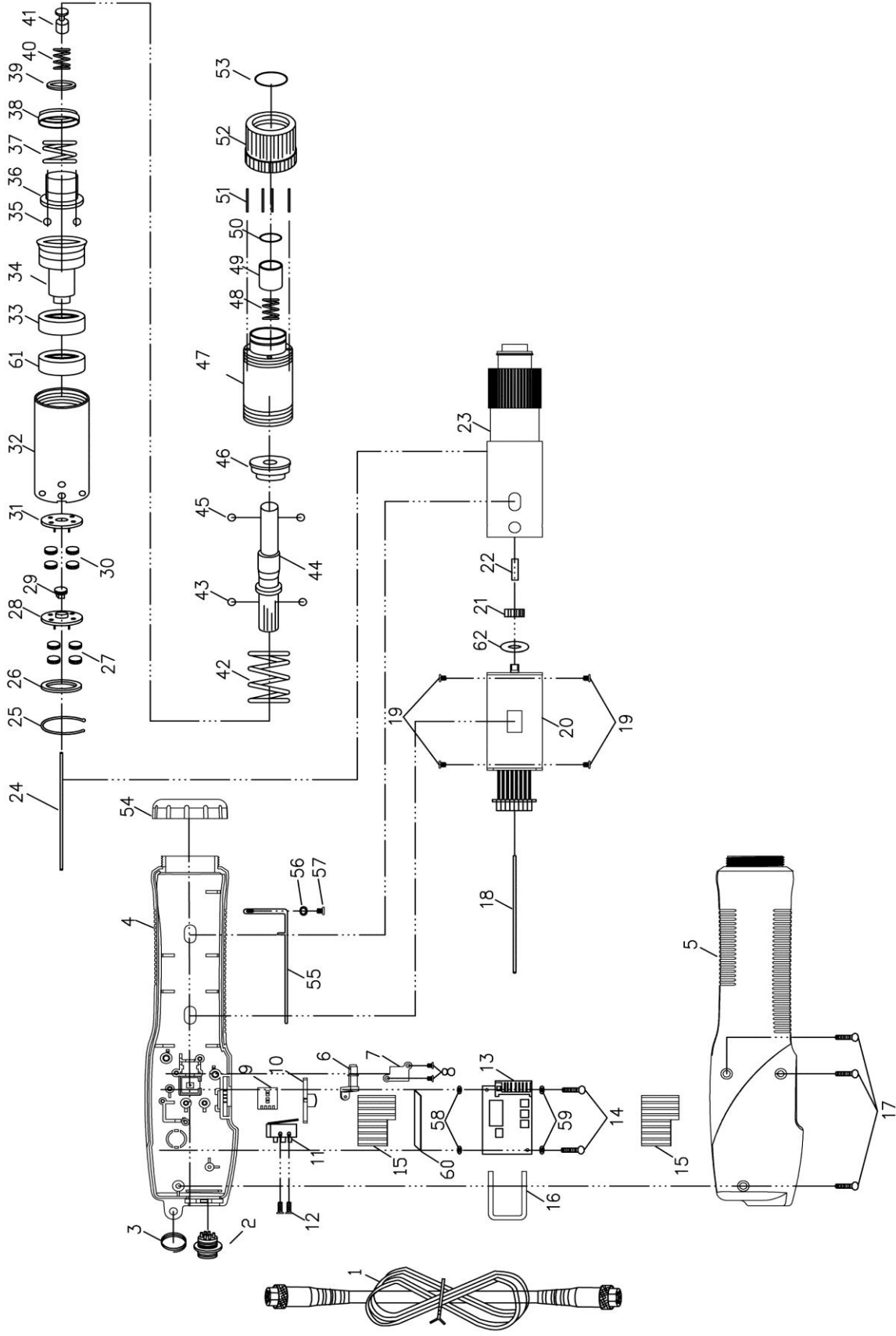
Delta Regis Model #CESL823, 824 (r0) (CE/RoHS)

Delta Regis Model #CESL823, 824 (r0) (CE/RoHS) - Parts List

Ref #	Part Number	Description	Qty
1	DR96-66002	Cable Assembly, 6 pin	1
2	DR40-10193	Connector Assembly	1
3	DR80-10141A	Suspension Ring	1
4	DR40-10143	Start Lever	1
	DR40-10143ESD	Start Lever (ESD)	1
5	DR80-10216-STD	Housing - Std, Label Side	1
	DR80-10216	Housing - ESD, Label Side	1
6	DR80-10215-STD	Housing, Std (non-ESD)	1
	DR80-10215	Housing, ESD	1
7	DR15-10065A	Push Rod	1
8	DR12-10037	Fixture	1
9	DR40-10188-2BN	Control Board	1
10	DR10-10045A	Screw	2
	DR10-10048A	Screw (ESD models)	2
11	DR10-10062	Screw	2
12	DR40-10146B	Control Board - FWD/REV	1
13	DR80-10217	Fwd/Rev Button (823)	1
	DR80-10218	Fwd/Rev Button (824)	1
14	DR10-10032	Screw	3
15	DR40-10151C	Heat Sink	2
16	DR12-10038B	Clamp	1
17	DR40-10145C	Control Board - Start	1
18	DR10-10047	Screw	2
19	DR15-10060	Push Rod	1
20	DR10-10049	Screw	4
21	DR54-10031CE	Motor Assembly	1
22	DR30-10113A	Gear	1
23	DR15-10049	Push Rod	1
24	DR60-10176	Clutch Assembly CESL823	1
	DR60-10177	Clutch Assembly CESL824	1
25	DR15-10047	Push Rod	1
26	DR12-10028	C-Ring	1
27	DR11-10139	Washer	1
28	DR30-10067	Planet Gear	4
29	DR30-10071	Planet Shaft	1
30	DR30-10075	Gear	1
31	DR30-10067	Planet Gear	4
32	DR30-10071	Planet Shaft	1

Ref #	Part Number	Description	Qty
33	DR60-10087	Gear Case	1
34	DR20-10034	Bearing	1
35	DR60-10107	Upper Clutch	1
36	DR13-10019	Steel Ball - 4mm	2
37	DR11-10116	Stop Pilot (823)	1
	DR11-10163	Stop Pilot (824)	1
38	DR13-10019	Steel Ball - 4mm	2
39	DR31-10016A	Output Shaft	1
40	DR13-10017	Steel Ball - 2.5mm	2
41	DR11-10113	Clutch Spring Plate	1
42	DR14-10059	Spring (823)	1
	DR14-10061	Spring (824)	1
43	DR11-10115	Spring Cap	1
44	DR97-62302	Clutch Spring (823)	1
	DR97-62403	Clutch Spring (824)	1
45	DR16-10020	Clutch Spring Seat	1
46	DR12-10019	C-Ring	1
47	DR60-10088	Clutch Case	1
48	DR14-10048	Bit Spring	1
49	DR16-10016	Bit Sleeve	1
50	DR12-10010	C-Ring	1
51	DR15-10057	Torque Adjusting Pin	4
52	DR11-10114	Torque Adjusting Nut	1
53	DR12-10020	C-Ring	1
54	DR11-10119	Housing Nut	1
	DR11-10119ESD	Housing Nut (ESD)	1
55	DR40-10194	Grounding Strip	1
56	DR11-10142	Washer	1
57	DR10-10050	Screw	1
58	DR40-10156	Insulating Washer - ESD (0.8mm)	2
59	DR11-10154	Insulating Washer - ESD (0.3mm)	2
60	DR14-10043	Trigger Spring	1
61	DR11-10159	Gasket	1
62	DR20-10044	Bearing	1
63	DR11-10164	Insulating Washer (0.2mm)	1

Subject to change without notice



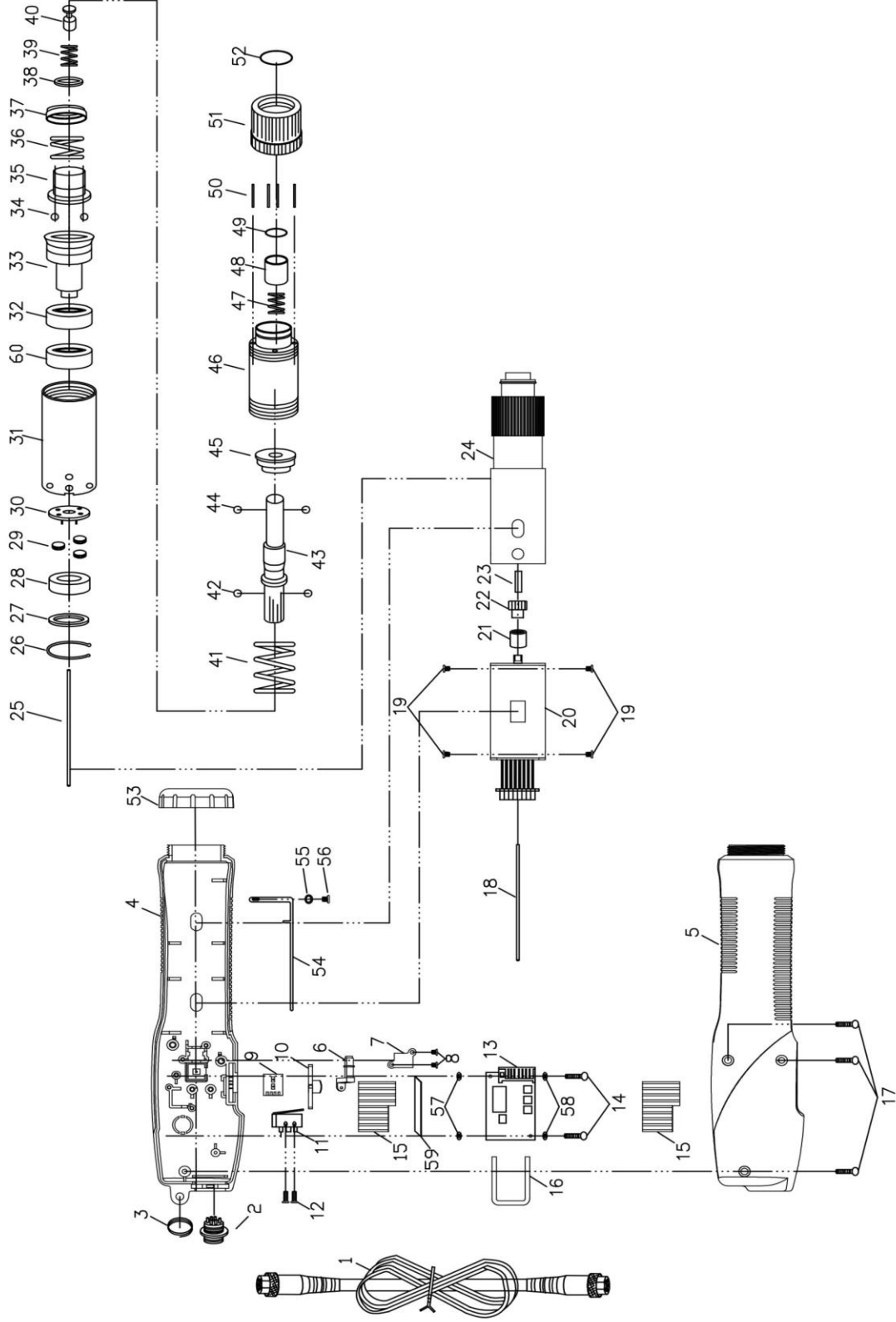
Delta Regis Model #CESL823P, 824P (r0) (CE/RoHS)

Delta Regis Model #CESL823P, 824P (r0) (CE/RoHS) - Parts List

Ref #	Part Number	Description	Qty
1	DR96-66002	Cable Assembly, 6 pin	1
2	DR40-10158A	Connector Assy, 6 pin	1
3	DR80-10141A	Suspension Ring	1
4	DR80-10223-STD	Housing (Label Side)	1
	DR80-10223	Housing - ESD (Label Side)	1
5	DR80-10222-STD	Housing	1
	DR80-10222	Housing - ESD	1
6	DR15-10065A	Push Rod	1
7	DR12-10037	Fixture	1
8	DR10-10047	Screw	2
9	DR40-10146B	Control Board - Fwd/Rev	1
10	DR80-10217	Fwd/Rev Switch Button (823P)	1
	DR80-10218	Fwd/Rev Switch Button (824P)	1
11	DR40-10125	Clutch Switch	1
12	DR10-10052	Screw	2
13	DR40-10188-2BN	Control Board	1
14	DR10-10045A	Screw	2
	DR10-10048A	Screw (ESD models)	2
15	DR40-10151C	Heat Sink	2
16	DR12-10038B	Clamp	1
17	DR10-10032	Screw	3
18	DR15-10060	Push Rod	1
19	DR10-10049	Screw	4
20	DR54-10031CE	Motor Assembly	1
21	DR30-10113A	Gear	1
22	DR15-10049	Push Rod	1
23	DR60-10166	Clutch Assembly (823P)	1
	DR60-10167	Clutch Assembly (824P)	1
24	DR15-10069	Push Rod	1
25	DR12-10028	C-Ring	1
26	DR11-10139	Washer	1
27	DR30-10067	Planet Gear	4
28	DR30-10071	Planet Shaft	1
29	DR30-10075	Gear	1
30	DR30-10067	Planet Gear	4
31	DR30-10071	Planet Shaft	1
32	DR60-10087	Gear Case	1

Ref #	Part Number	Description	Qty
33	DR20-10034	Bearing	1
34	DR60-10168	Upper Clutch	1
35	DR13-10019	Steel Ball	2
36	DR16-10021	Clutch Plate	1
37	DR14-10049	Spring (823P)	1
	DR14-10051	Spring (824P)	1
38	DR11-10115	Spring Cap	1
39	DR11-10118	Inner Spring Cap	1
40	DR14-10050A	Inner Spring (823P)	1
	DR14-10050	Inner Spring (824P)	1
41	DR11-10116	Stop Pilot (823P)	1
	DR11-10163	Stop Pilot (824P)	1
42	DR97-62304	Clutch Spring (823P)	1
	DR97-62303	Clutch Spring (824P)	1
43	DR13-10018	Steel Ball	2
44	DR31-10017A	Output Shaft	1
45	DR13-10017	Steel Ball	2
46	DR16-10022	Clutch Spring Seat	1
47	DR60-10048	Clutch Case	1
48	DR14-10048A	Bit Retaining Spring (823P)	1
	DR14-10048	Bit Retaining Spring (824P)	1
49	DR16-10016	Bit Sleeve	1
50	DR12-10010	C-Ring	1
51	DR15-10057	Torque Adjusting Pin	4
52	DR11-10114	Torque Adjusting Nut	1
53	DR12-10020	C-Ring	1
54	DR11-10119	Housing Nut	1
	DR11-10119ESD	Housing Nut - ESD	1
55	DR40-10159A	Grounding Strip	1
56	DR11-10142	Washer	1
57	DR10-10050	Screw	1
58	DR40-10156	Insulating Washer (ESD, 0.8mm)	2
59	DR11-10154	Insulating Washer (ESD, 0.3mm)	2
60	DR11-10159	Gasket	1
61	DR20-10044	Bearing	1
62	DR11-10164	Insulating Washer (0.2mm)	1

Updated Mar 2015, subject to change without notice



Delta Regis Model #CESL823PF, 824PF (r0) (CE/RoHS)

Delta Regis Model #CESL823PF, 824PF (r0) (CE/RoHS) - Parts List

Ref #	Part Number	Description	Qty	Ref #	Part Number	Description	Qty
1	DR96-66002	Cable Assembly, 6 pin	1	33	DR60-10168	Upper Clutch	1
2	DR40-10158A	Connector Assy, 6 pin	1	34	DR13-10019	Steel Ball	2
3	DR80-10141A	Suspension Ring	1	35	DR16-10021	Clutch Plate	1
4	DR80-10223-STD	Housing (Label Side)	1	36	DR14-10049	Spring (823PF)	1
	DR80-10223	Housing - ESD (Label Side)	1		DR14-10061	Spring (824PF)	1
5	DR80-10222-STD	Housing	1	37	DR11-10115	Spring Cap	1
	DR80-10222	Housing - ESD	1	38	DR11-10118	Inner Spring Cap	1
6	DR15-10065A	Push Rod	1	39	DR14-10050A	Inner Spring (823PF)	1
7	DR12-10037	Fixture	1		DR14-10050	Inner Spring (824PF)	1
8	DR10-10047	Screw	2	40	DR11-10163	Stop Pilot	1
9	DR40-10146B	Control Board - Fwd/Rev	1	41	DR97-62304	Clutch Spring (823PF)	1
10	DR80-10217	Fwd/Rev Switch Button	1		DR97-62404	Clutch Spring (824PF)	1
11	DR40-10125	Clutch Switch	1	42	DR13-10018	Steel Ball	2
12	DR10-10052	Screw	2	43	DR31-10017A	Output Shaft	1
13	DR40-10188-2BN	Control Board	1	44	DR13-10017	Steel Ball	2
14	DR10-10045A	Screw	2	45	DR16-10022	Clutch Spring Seat	1
	DR10-10048A	Screw (ESD models)	2	46	DR60-10048	Clutch Case	1
15	DR40-10151C	Heat Sink	2	47	DR14-10048A	Bit Retaining Spring (823PF)	1
16	DR12-10038B	Clamp	1		DR14-10048	Bit Retaining Spring (824PF)	1
17	DR10-10032	Screw	3	48	DR16-10016	Bit Sleeve	1
18	DR15-10060	Push Rod	1	49	DR12-10010	C-Ring	1
19	DR10-10049	Screw	4	50	DR15-10057	Torque Adjusting Pin	4
20	DR54-10044	Motor Assembly	1	51	DR11-10114	Torque Adjusting Nut	1
21	DR30-10127	Gear Coupler	1	52	DR12-10020	C-Ring	1
22	DR30-10126	Gear	1	53	DR11-10119	Housing Nut	1
23	DR15-10072	Push Rod	1		DR11-10119ESD	Housing Nut - ESD	1
24	DR60-10166F	Clutch Assembly (823PF)	1	54	DR40-10159A	Grounding Strip	1
	DR60-10167F	Clutch Assembly (824PF)	1	55	DR11-10142	Washer	1
25	DR15-10069	Push Rod	1	56	DR10-10050	Screw	1
26	DR12-10028	C-Ring	1	57	DR40-10156	Insulating Washer (ESD, 0.8mm)	2
27	DR11-10139	Washer	1	58	DR11-10154	Insulating Washer (ESD, 0.3mm)	2
28	DR11-10143	Spacer	1	59	DR11-10159	Gasket	1
29	DR30-10125	Planet Gear	3	60	DR20-10044	Bearing	1
30	DR30-10145	Planet Shaft	1				
31	DR60-10173	Gear Case	1				
32	DR20-10034	Bearing	1				

Updated Nov 2016, subject to change without notice