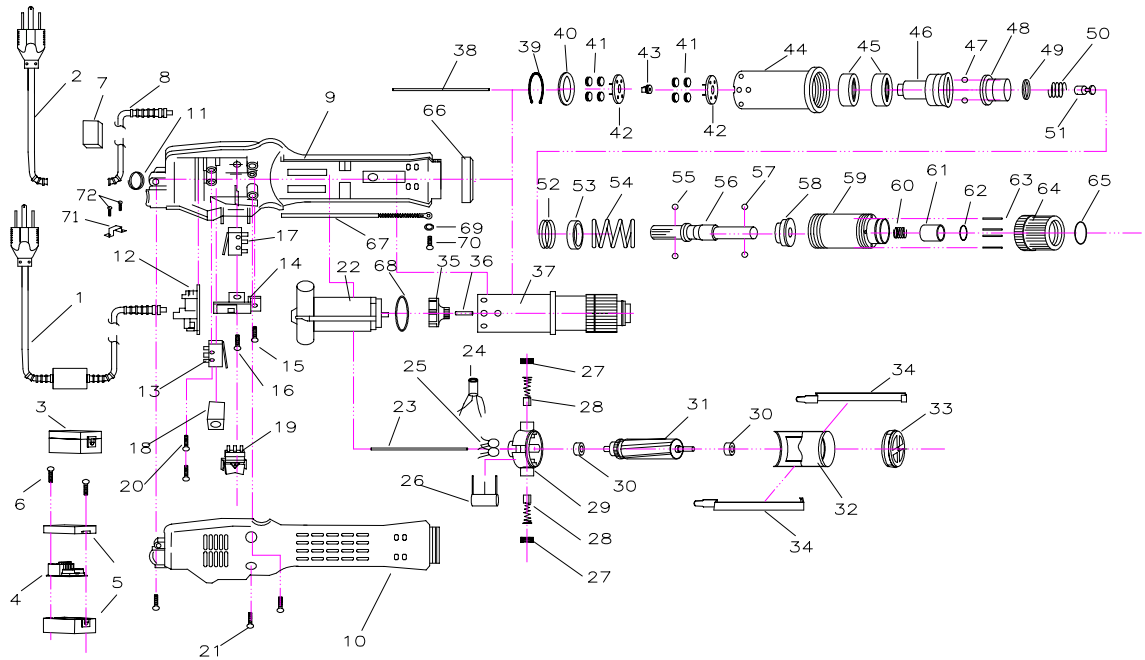


### Delta Regis Model #ESL300, ESL301 - Parts List

Delta Regis Tools, Inc. 3315 Industrial 25th Street, Fort Pierce, FL 34946 Tel: (888) 500-2755 / (772) 465-4302 Fax: (866) 500-7270 / (772) 465-4368 www.deltaregis.com

Ref #	Part Number	Description	Qty	Ref #	Part Number	Description	Qty
1	DR96-10022	Cable Assembly	1	39	DR60-10042	Clutch Assembly (300)	1
2	DR96-10019	Cable - Short	1		DR60-10043	Clutch Assembly (301)	1
3	DR40-10084	EMC Assembly	1	40	DR15-10045	Push Rod	1
4	DR40-10082	P.C.B. - EMC	1	41	DR12-10018	C-Ring	1
5	DR80-10164	EMC Housing	1	42	DR11-10121	Thrust Washer	1
6	DR10-10036	Screw	2	43	DR30-10073	Planet Gear	8
7	DR40-10080	Filter	1	44	DR30-10072	Planet Shaft	2
8	DR96-10021	Cable - Long	1	45	DR30-10076	Gear	1
9	DR80-10163	Housing - Label Side	1	46	DR60-10041	Gear Case	1
10	DR80-10162	Housing	1	47	DR20-10034	Bearing	2
11	DR40-10077	Start Lever	1	48	DR60-10033	Upper Clutch Head	1
12	DR14-10043	Trigger Spring	1	49	DR11-10116	Stop Pilot	1
13	DR80-10141	Suspension Ring	1	50	DR13-10019	Steel Ball - 4mm	2
14	DR40-10083	Control Board	1	51	DR13-10019	Steel Ball - 4mm	2
15	DR40-10104	Microswitch	1	52	DR31-10016	Output Shaft	1
16	DR40-10079	Brake Resistor	1	53	DR13-10020	Steel Ball - 2.38mm	2
17	DR12-10022	Switch Base	1	54	DR11-10113	Clutch Spring Plate	1
18	DR40-10087	Start Switch	1	55	DR14-10049	Spring (300)	1
19	DR10-10038	Screw	1		DR14-10051	Spring (301)	1
20	DR10-10039	Screw	1	56	DR11-10115	Spring Cap	1
21	DR40-10085	Fwd/Rev Switch (300) Orange	1	57	DR97-30001	Clutch Spring (300)	1
	DR40-10086	Fwd/Rev Switch (301) White	1		DR97-30101	Clutch Spring (301)	1
22	DR10-10037	Screw	2	58	DR16-10020	Clutch Spring Seat	1
23	DR10-10032	Screw	3	59	DR12-10019	C-Ring	1
24	DR54-10016	Motor Assembly (300/301)	1	61	DR60-10032	Clutch Case	1
25	DR15-10050	Push Rod	1	62	DR14-10048	Bit Spring	1
26	DR40-10050	Coil	1	63	DR16-10016	Bit Sleeve	1
27	DR40-10069	Capacitor	2	64	DR12-10010	C-Ring	1
28	DR40-10068	Capacitor	1	65	DR15-10044	Torque Adjusting Pin	4
29	DR55-10011	Brush Cap (300/301)	2	66	DR11-10114	Torque Adjusting Nut	1
30	DR55-10008	Carbon Brushes - Pair	1	67	DR12-10020	C-Ring	1
31	DR51-10028	Motor End Cover - Top	1	68	DR11-10119	Housing Nut	1
32	DR20-10033	Bearing	2	69	DR40-10103	Ground Wire	1
33	DR52-10030	Armature (300/301)	1	70	DR11-10124	Isolation Washer	1
34	DR50-10025	Motor Yoke Assembly (300/301)	1	71	DR11-10120	Washer	1
35	DR51-10027	Motor End Cover	1	72	DR10-10040	Screw	1
36	DR12-10023	Motor Clip	2	73	DR12-10024	Clamp	1
37	DR52-10031	Fan	1	74	DR10-10041	Screw	2
38	DR15-10049	Push Rod	1				



### Delta Regis Model #ESL300P, ESL301P - Parts List

Delta Regis Tools, Inc. 3315 Industrial 25th Street, Fort Pierce, FL 34946 Tel: (888) 500-2755 / (772) 465-4302 Fax: (866) 500-7270 / (772) 465-4368 www.deltaregis.com

Ref #	Part Number	Description	Qty	Ref #	Part Number	Description	Qty
1	DR96-10022	Cable Assembly	1	38	DR15-10047	Push Rod	1
2	DR96-10019	Cable - Short (300/301)	1	39	DR12-10018	C-Ring	1
3	DR40-10084	EMC Assembly	1	40	DR11-10121	Thrust Washer	1
4	DR40-10082	P.C.B. - EMC	1	41	DR30-10073	Planet Gear	8
5	DR80-10164	EMC Housing	1	42	DR30-10072	Planet Shaft	2
6	DR10-10036	Screw	2	43	DR30-10076	Gear	1
7	DR40-10080	Filter	1	44	DR60-10041	Gear Case	1
8	DR96-10021	Cable - Long (300/301)	1	45	DR20-10034	Bearing	2
9	DR80-10166	Housing	1	46	DR60-10038	Upper Clutch (300P)	1
10	DR80-10165	Housing	1		DR60-10037	Upper Clutch (301P)	1
11	DR80-10141	Suspension Ring	1	47	DR13-10019	Steel Ball - 4mm	2
12	DR40-10089	Control Board	1	48	DR16-10021	Clutch Spring Seat	1
13	DR40-10090	Microswitch	1	49	DR11-10118	Spring Cap	1
14	DR12-10022	Switch Base	1	50	DR14-10050	Spring	1
15	DR10-10038	Screw	1	51	DR11-10116	Stop Pilot	1
16	DR10-10039	Screw	1	52	DR14-10049	Spring (300P)	1
17	DR40-10104	Microswitch	1		DR14-10052	Spring (301P)	1
18	DR40-10079	Brake Resistor	1	53	DR11-10115	Spring Cap	1
19	DR40-10085	Fwd/Rev Switch (300P) Orange	1	54	DR97-30002	Clutch Spring (300P)	1
	DR40-10086	Fwd/Rev Switch (301P) White	1		DR97-30102	Clutch Spring (301P)	1
20	DR10-10037	Screw	2	55	DR13-10018	Steel Ball - 3.15mm	2
21	DR10-10032	Screw	3	56	DR31-10017	Output Shaft	1
22	DR54-10016	Motor Assembly (300/301)	1	57	DR13-10017	Steel Ball - 2.5mm	2
23	DR15-10050	Push Rod	1	58	DR16-10022	Clutch Spring Seat	1
24	DR40-10050	Coil	1	59	DR60-10048	Clutch Case	1
25	DR40-10069	Capacitor	2	60	DR14-10048	Bit Spring	1
26	DR40-10068	Capacitor	1	61	DR16-10016	Bit Sleeve	1
27	DR55-10011	Brush Cap (300/301)	2	62	DR12-10010	C-Ring	1
28	DR55-10008	Carbon Brushes - Pair	2	63	DR15-10044	Torque Adjusting Pin	4
29	DR51-10028	Motor End Cover	1	64	DR11-10114	Torque Adjusting Nut	1
30	DR20-10033	Bearing	2	65	DR12-10020	C-Ring	1
31	DR52-10030	Armature (300/301)	1	66	DR11-10119	Housing Nut	1
32	DR50-10025	Motor Yoke Assembly (300/301)	1	67	DR40-10103	Ground Wire	1
33	DR51-10027	Motor End Cover	1	68	DR11-10124	Isolation Washer	1
34	DR12-10023	Motor Clip	2	69	DR11-10120	Washer	1
35	DR52-10031	Fan	1	70	DR10-10040	Screw	1
36	DR15-10049	Push Rod	1	71	DR12-10024	Clamp	1
37	DR60-10044	Clutch Assembly (300P)	1	72	DR10-10041	Screw	2
	DR60-10045	Clutch Assembly (301P)	1				